



University of Toronto

Supporting prosperity today with the infrastructure of tomorrow



Dr. Leah E. Cowen
Vice-President, Research and Innovation,
and Strategic Initiatives,
University of Toronto



University of Toronto: Tri-Campus



99,794 Total enrolment

1,000+ Programs of Study

13,311 Appointed Faculty and
Staff Members

\$1.6B Endowed funds for
student support

One of the GTA's largest landowners

215 Properties

17.1M SF Buildings

\$3.6B Annual operating budget

AA+ credit rating (S & P Global Ratings)



The opportunity: Catalyzing innovation through infrastructure

1

Leverage U of T's success

- \$1.54B in research funding to U of T and 14 affiliated hospitals
- \$12B investor start-up funds, 1200+ companies, 13 Nobel Laureates
- 200 U of T-linked AI startups in last 5 years (\$5B; 5K jobs)

2

Support region's strengths

- Ontario is Canada's top AI hub: 300 + firms, 40,000 jobs
- GTA is the fastest AI tech talent market in Canada and has 60,000 + more jobs than people
- No. 1 clinical trials site in Canada, 88,000 + employees in life sciences

3

Advance resilience

- \$13B in exports in the life sciences
- Protect and grow region's AI reputation as global investments grow
- 3.5 million square foot shortfall in GTHA, MaRS and JLABS at capacity



The Schwartz Reisman Innovation Campus anchors Canada's leading AI, life sciences, and biomedical/bioengineering research and innovation cluster.



- 250,000 sq.feet
- 5,000 sq. feet of co-working space
- Vector Institute
- Schwartz Reisman Institute for Technology and Society
- University of Toronto Entrepreneurship



Acceleration Consortium

- 11 state-of-the-art self-driving labs to accelerate discovery using AI and automation
- 420 participants in AI training
- Global partners include Unilever, BASF, Nvidia

AC video clip goes here





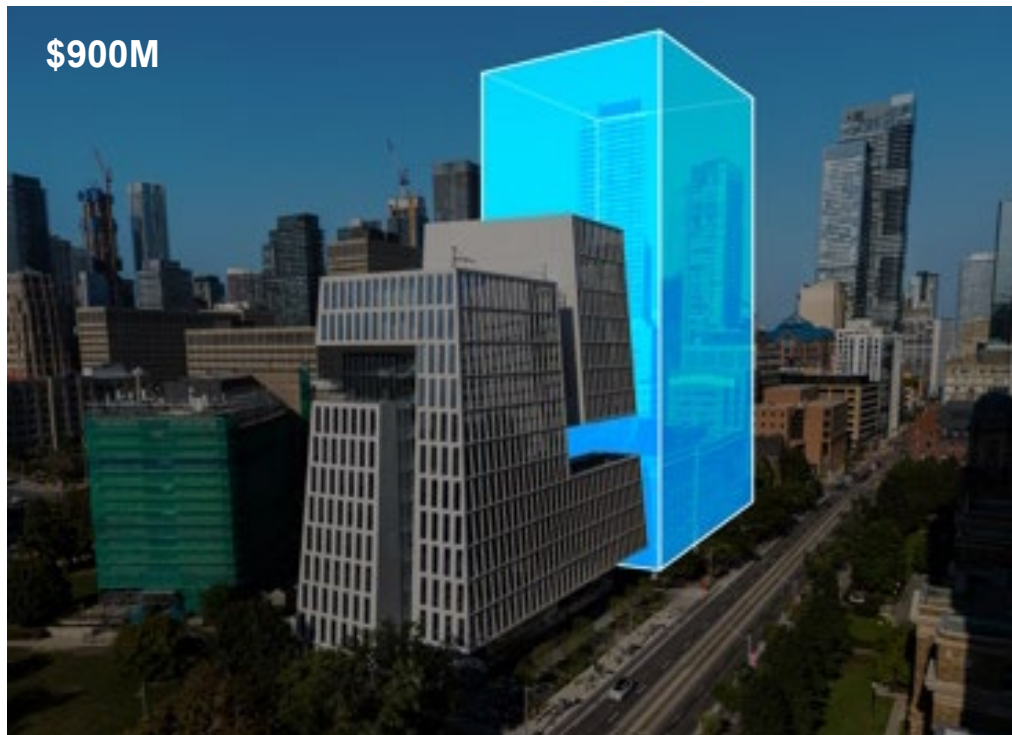
Deep Learning

Geoffrey Hinton, 2006
(awarded Nobel Prize in
Physics for this work in 2024)

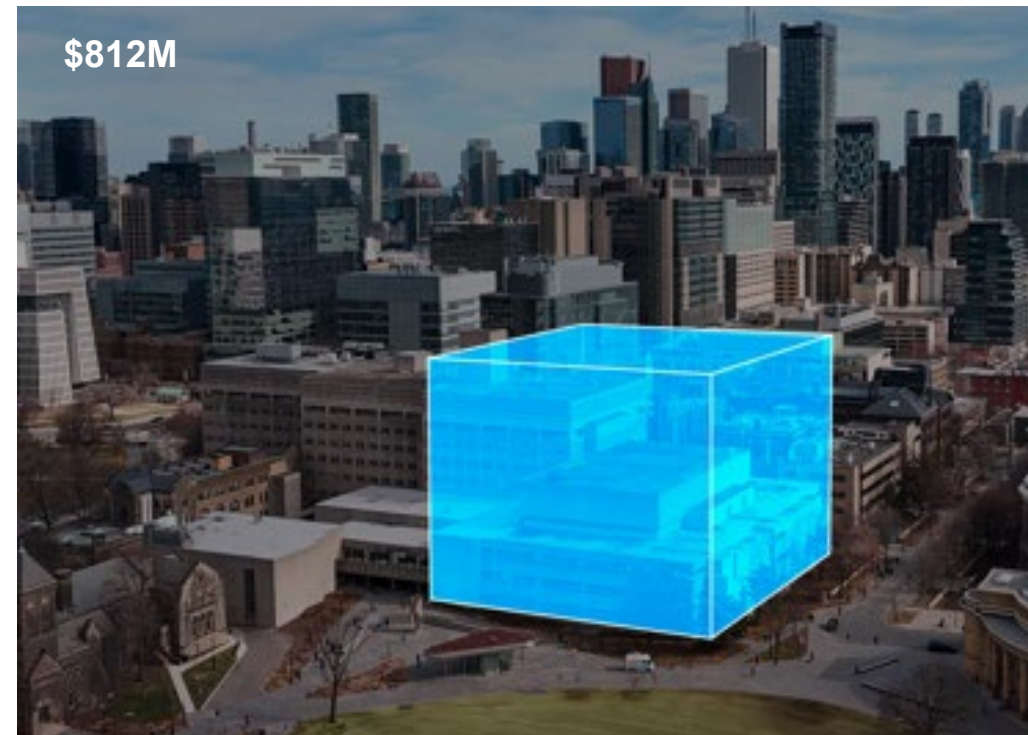


Infrastructure of tomorrow: Biomedical Commercialization Corridor

A new Life Sciences Innovation Complex



A State-of-the-art Medical Sciences Building

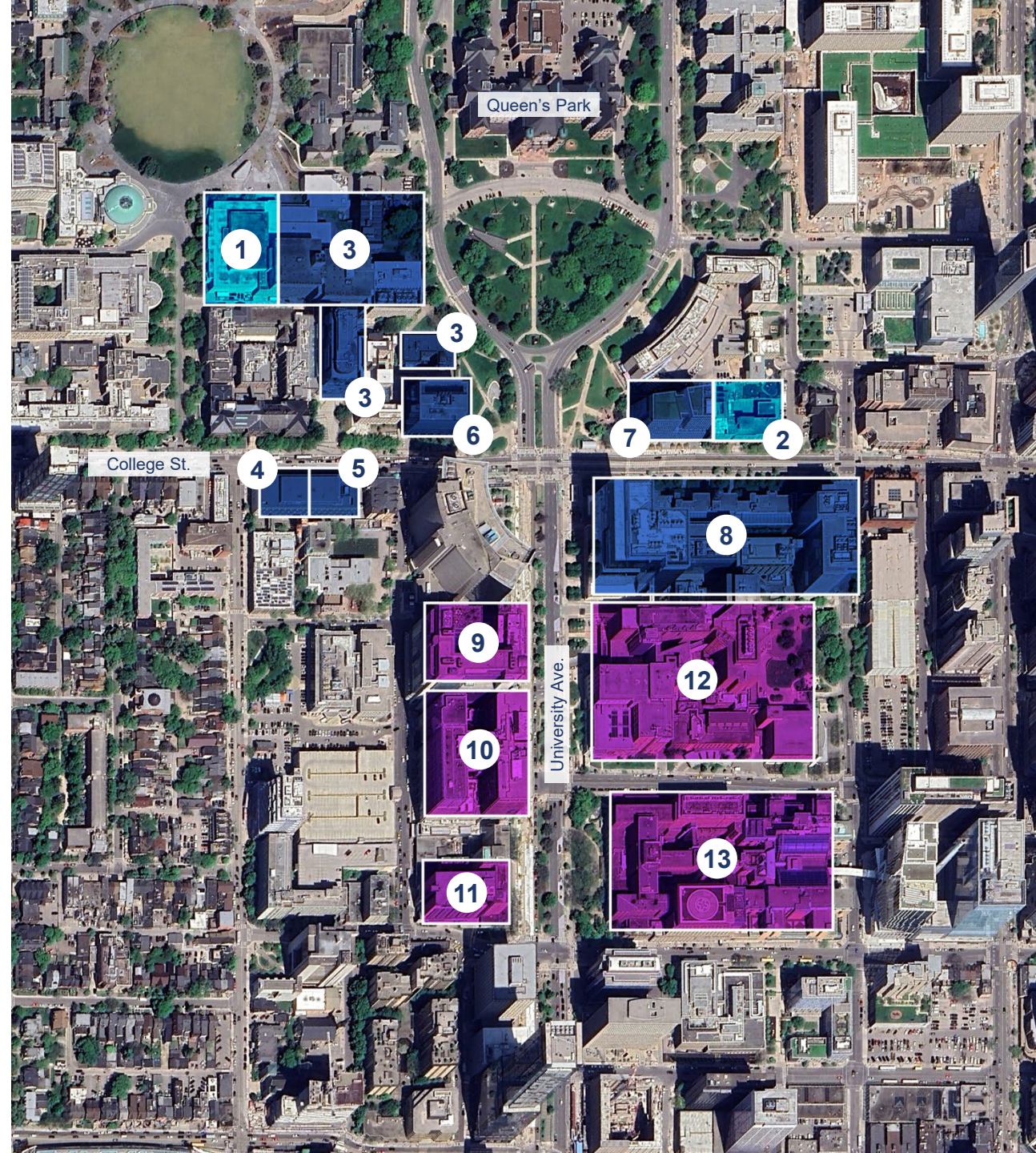


A growing innovation corridor

1. **New medical sciences building**
2. **New life sciences innovation complex**
3. Temerty Faculty of Medicine
(includes Toronto High Containment Facility)
4. Dalla Lana School of Public Health
5. Lawrence Bloomberg Faculty of Nursing
6. Leslie Dan Faculty of Pharmacy
7. Schwartz Reisman Innovation Campus (Phase 1)
8. MaRS

Adjacent Toronto Academic Health Sciences Network (TAHSN) hospitals and health-care sites

9. Princess Margaret
10. Mount Sinai
11. Toronto Rehab
12. Toronto General
13. SickKids

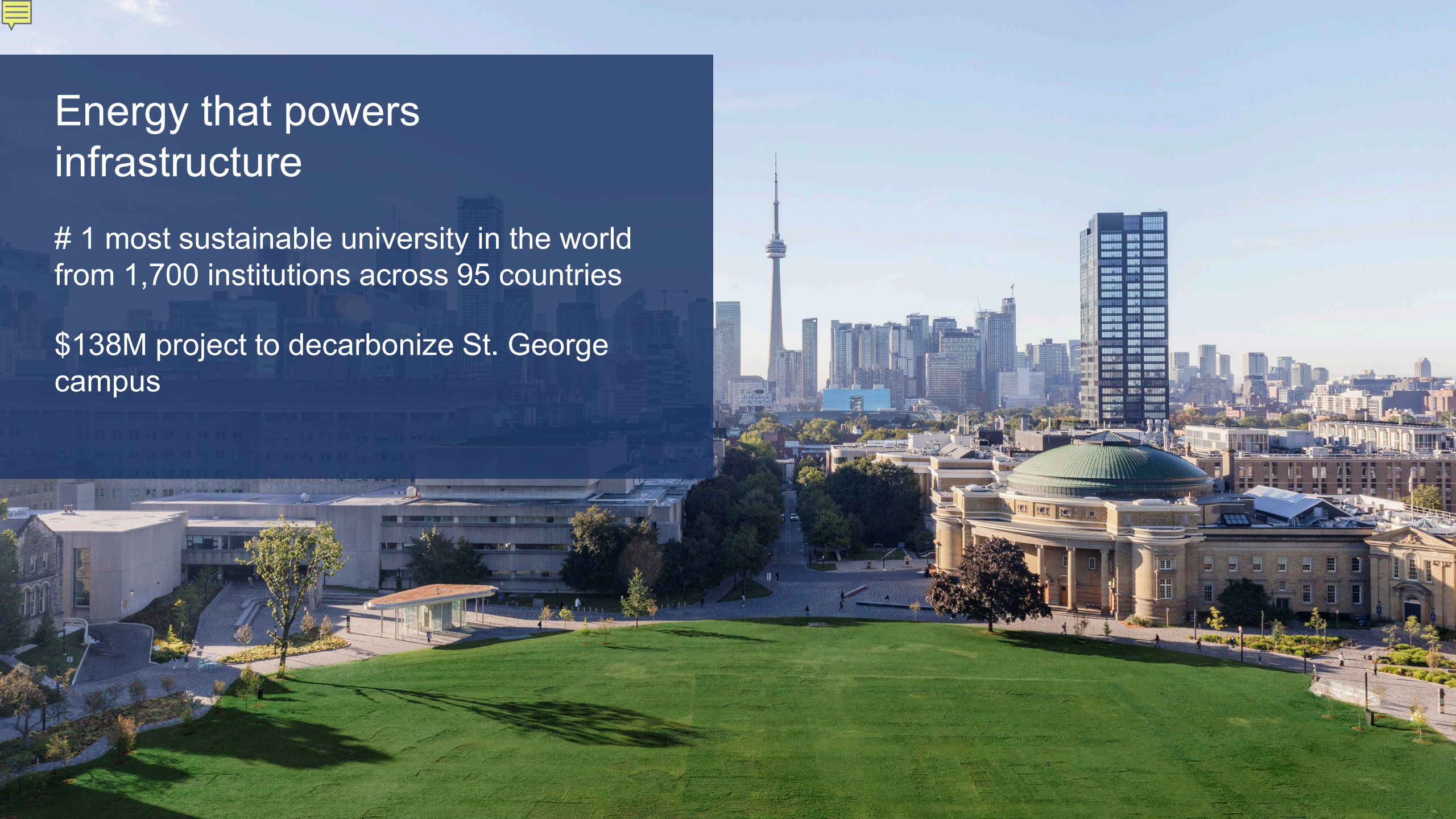




Energy that powers infrastructure

1 most sustainable university in the world
from 1,700 institutions across 95 countries

\$138M project to decarbonize St. George
campus





Thank you

